

Notes G and E

How to write notes G and E on the staff

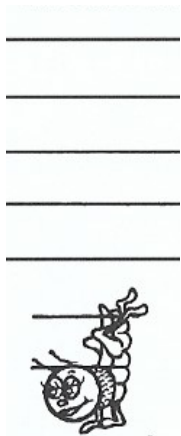


ViolinSchool
MusicLand

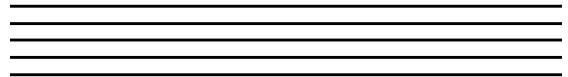
www.ViolinSchool.com

This is how we write the notes **G** and **E** on the staff.
G is the lowest string of your violin, and **E** is the highest.

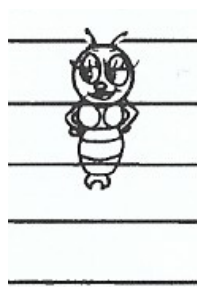
Gussie says: Write the **G** two ledger lines under the staff!



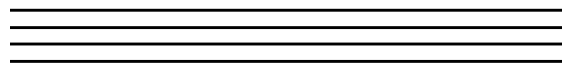
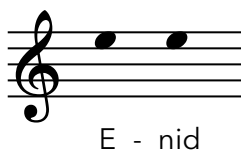
G sits below the staff under **two** ledger lines.
Draw a treble clef and some Gs below.



Enid says: Write the **E** in the **top space** of the staff!

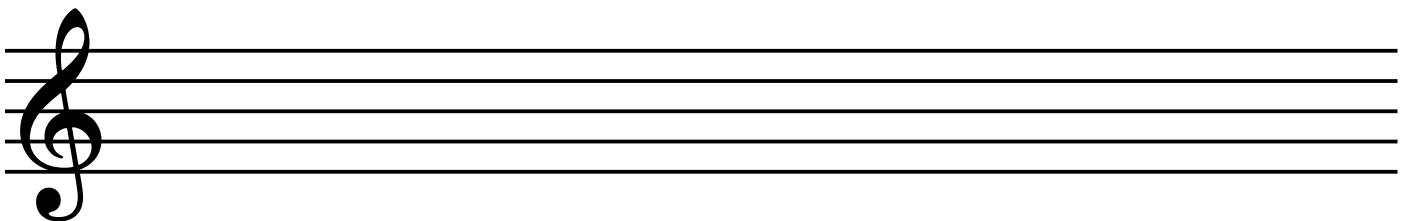


E sits in the top space of the staff.
Draw a treble clef and some Es below.



Activities

1) **Create your own piece!** Use any notes from **G, D, A** and **E**!



2) **Play** what you have written!