

# Stave and Treble Clef

## The Horizontal Lines



ViolinSchool  
MusicLand

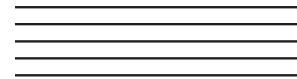
[www.ViolinSchool.com](http://www.ViolinSchool.com)

The five lines that music is written on is called a **Stave**. At the beginning of the stave there is a **Treble Clef** which tells us that the music is suitable for playing on the violin!

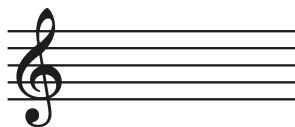
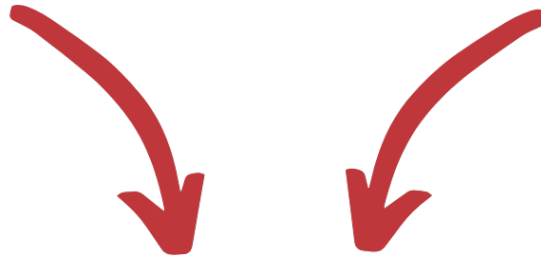
### The Treble Clef



### The Stave



Now we add the treble clef onto the stave!



## Activities

Here is another stave with a treble clef. To draw one, start by placing the tip of your pencil **in the middle**, and then **follow the broken line**:

