

Hooked Bowing

or Linked Bowing



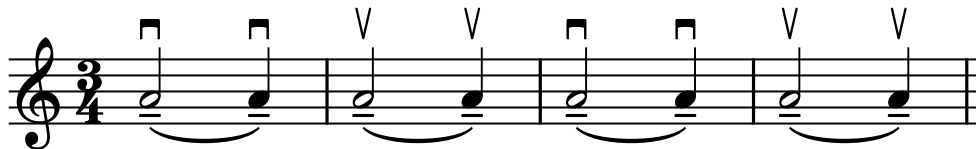
ViolinSchool
MusicLand

www.ViolinSchool.com

You will see a tie under the notes with the tenuto marks. These marks mean give emphasis to each note.

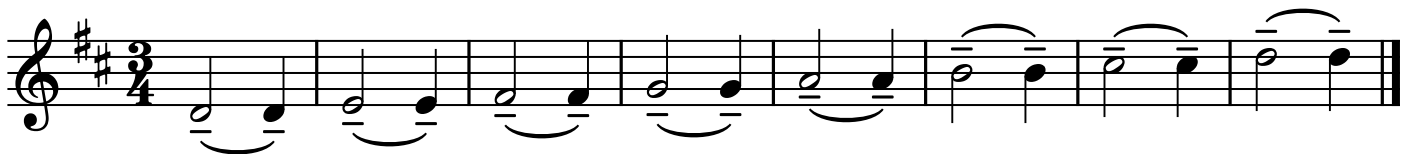
A **down-bow** will be pull - 'stop' - pull

An **up-bow** will be push - 'stop' - push



Activities

Try playing '**Climbing the Scale on D**' to this rhythm:



Now **copy** it onto the stave below:

