

Barlines

Dividing Up The Time



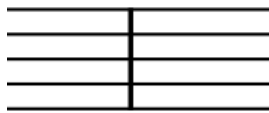
ViolinSchool
MusicLand

www.ViolinSchool.com

A **Barline** is the line that chops up the music into regular blocks of time, so that it's easier to read!

A **Double Barline** shows that the music has come to a stop. There's no more music to play!

Barline



Double Barline

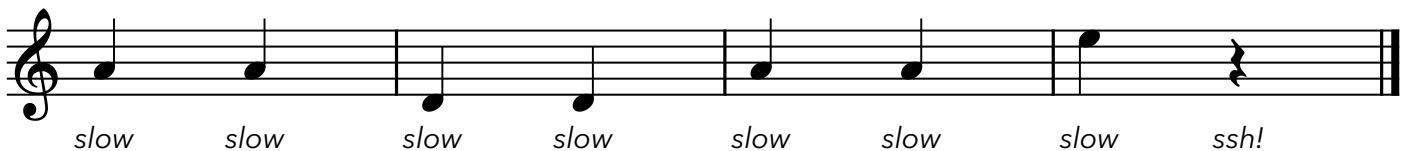


Bar 1

Bar 2

Bar 3

Bar 4



In this example there are **two** beats in each bar.

Activities

On the line of music below, try adding barlines after every two beats, and a double barline at the end of the music:

