

# Time Signature 2/4

# Two Beats In A Bar



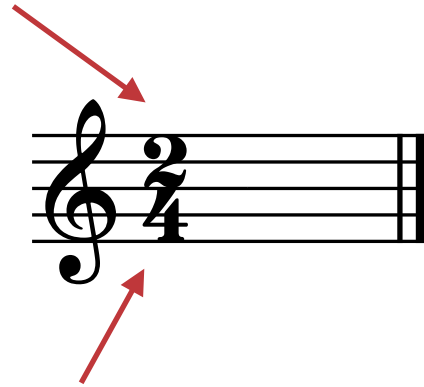
# ViolinSchool MusicLand

**www.ViolinSchool.com**

To make it easy to count the music, we use **Time Signatures** - two numbers that sit next to the treble clef, and tell us how many beats to count.

The time signature of 2/4 sits at the beginning of the stave, after the treble clef.

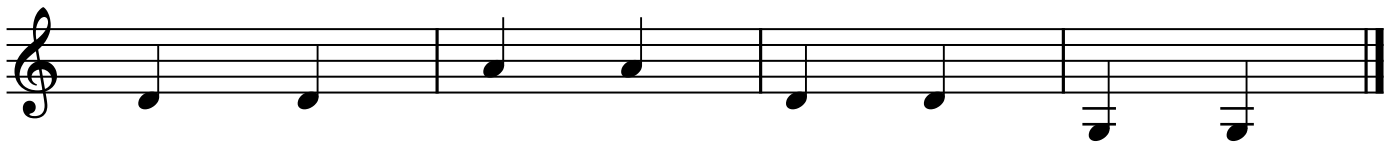
The **top number**, 2, tells us that there are **2 beats** in a bar.



The **bottom number**, 4, tells us that the beats of the music are **crotchets** (or **quarter notes**).

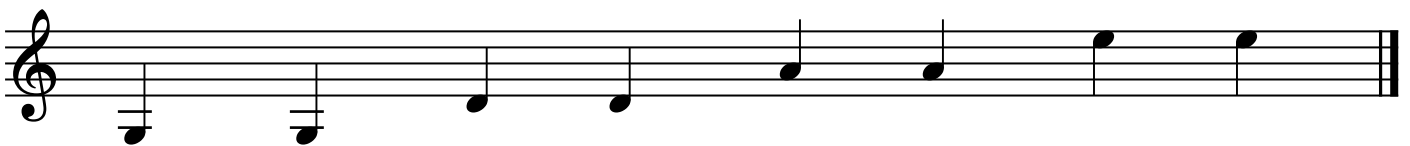
## Activities

1) Add the time signature of **2/4**, at the beginning of the stave.



**2)** Add the bar lines to make the bars.

You'll need to add a bar line after every second beat!



### 3) Don't forget the time signature!