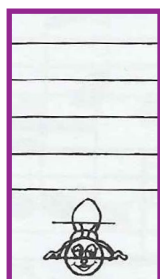


1st Finger Notes A and F#

On the G and E String



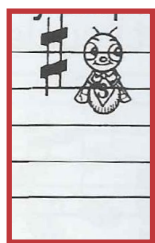
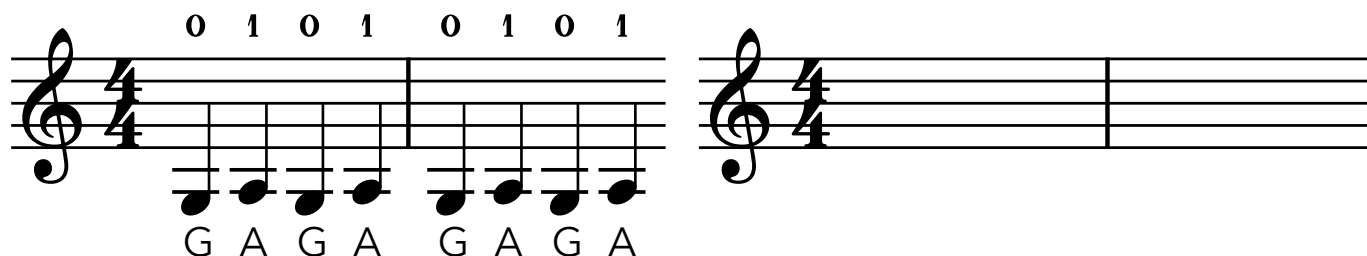
A is for **Annie**

You now know 2 As! 1st Finger on G (Annie), and Open String A (Alfie).

Annie's note (low A) sits next to Open String G (Gussie) on the staff.



Here is a pattern to tap on the G string, that sounds like a siren! **Copy it here:**



F# for **Freddie** (high F#)

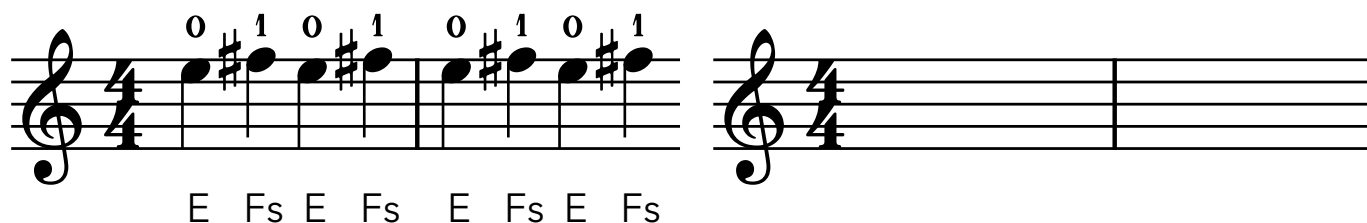
High F# sits on the top line of the stave.

It has a sharp sign in front of it.

(When singing, you can shorten 'F Sharp' to 'efs' so that it's easier to sing rhythms in time).



Here is a 'siren sound' to tap on the E String. **Copy the notes here:**



Activities

1. **Tap** and **sing** the siren sounds on both G and E strings.
2. **Pluck** the siren sound and then **play** with the bow.