

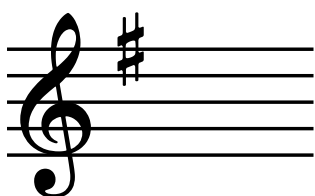
Key Signature of G Major

One Sharp

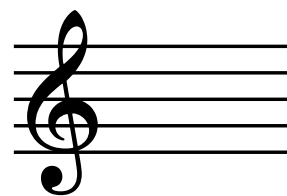
A **Key Signature** sits at the beginning of the stave, in front of the **Time Signature**. It tells you which **key** (note pattern) to use.

When you see a sharp (#) in the key signature, you know that **every** F in the piece of music you are about to play is actually an F sharp (F#)!

In **G major**, we have just one sharp (F#) in the key signature:

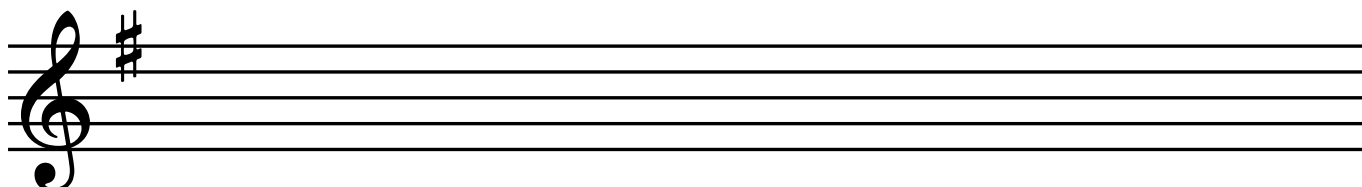


Copy the sharp here:



Activities

1) **Draw** some more F sharps on the stave below:



2) **Compose** your own piece in **G major**.

Add the **key signature** and **time signature** at the beginning of the stave, and a double bar line at the end. Start and finish your piece on **G**, and try to use all the open strings and 1st finger notes that you know as well.

