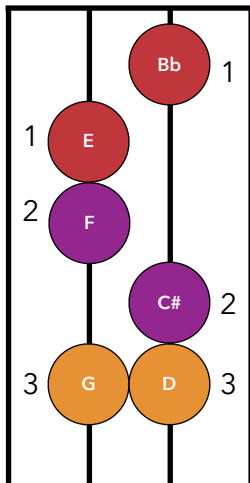


D Harmonic Minor Scale

D Harmonic Minor Finger Pattern



G D A E

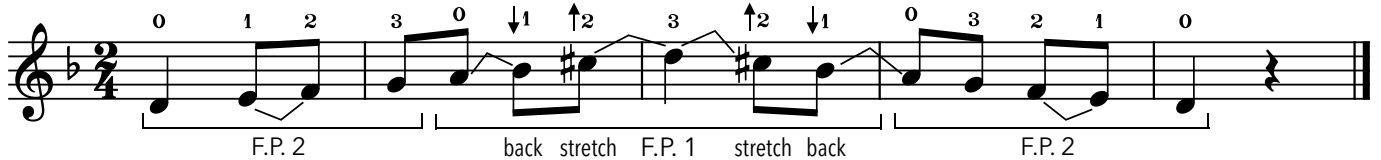


D harmonic minor uses finger pattern 2 on the D string, and finger pattern 1 (with 1st finger extended back) on the A string.

Each minor scale shares its key signature with a major scale. You can always find a minor scale's 'relative' major scale by counting up the note names by 3 semitones.

D → Eb → E → F

Therefore, D minor shares the same key signature as F major. They both have **one flat**, Bb, which looks like this:



Activities

- 1) Try **singing** this using the solfa names (*doh, ray, maw, fah, soh, law, te, doh'*)
- 2) **Sing** the note names. Sing '**beef**' instead of Bb and '**cees**' instead of C# to reduce these notes to one syllable. This makes it easier to sing!
- 3) **Play** the scale with separate and slurred quavers (two notes to one bow).
- 4) **Invent** some fun rhythm patterns for your scale, based on different phrases and words. For example:

