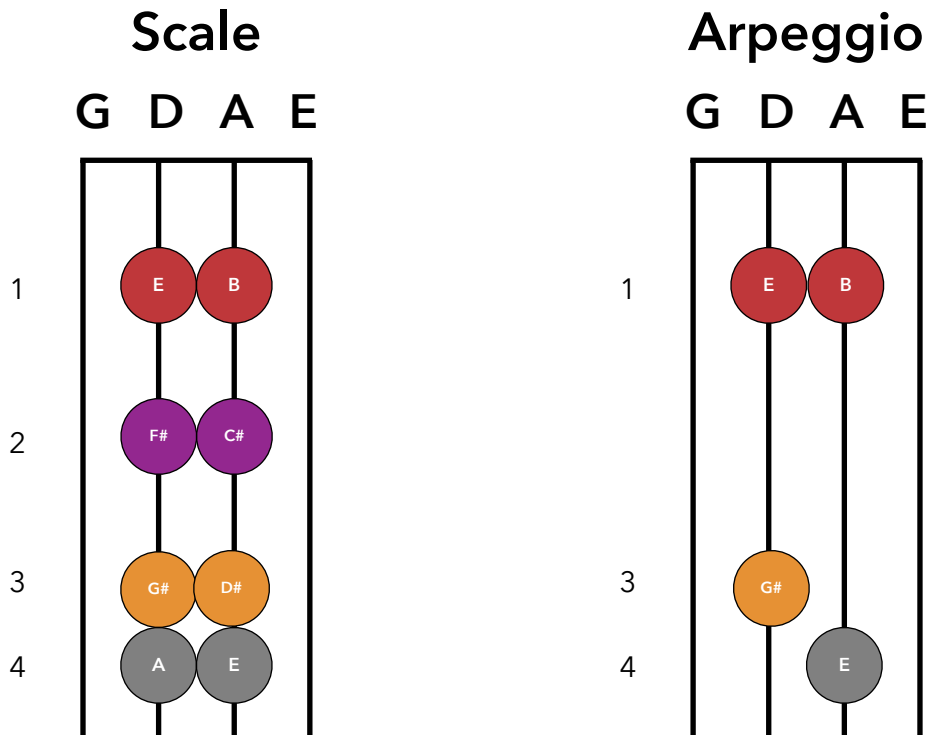


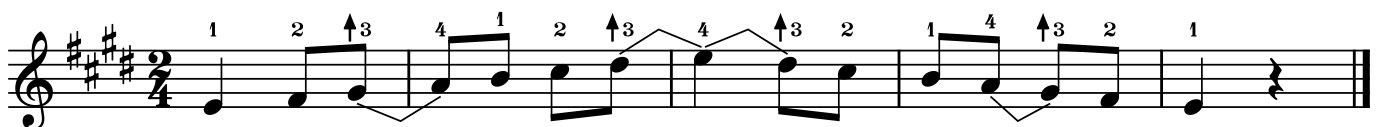
# E Major 1 Octave

## Scale and Arpeggio Finger Pattern 3

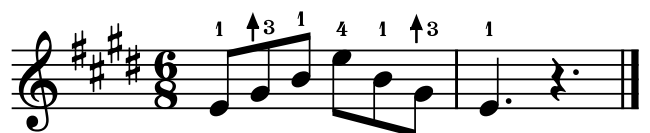
The scale of **E major** uses **finger pattern 3**. The 3rd and 4th fingers are always close together (one semitone apart)



Here are the notes for the **E major scale**. The lines show where the semitones are.



Here is the **E major arpeggio**:



Try playing the scale in 3 time:



Play a different rhythm as you descend!