

Slurs: Six in a Bow

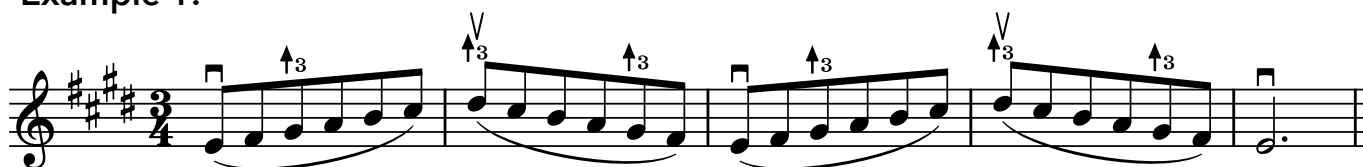
Bow Division and Finger Pattern 3



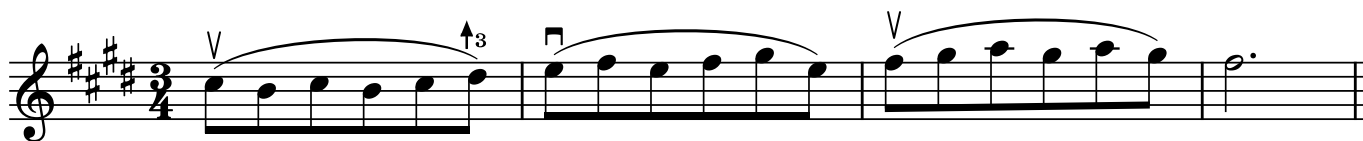
When you play several notes in one long bow, it's important to plan how much bow to use, so that you don't run out of bow towards the end!

For these activities, imagine that your bow is divided into six parts!

Example 1:



Example 2:



Example 3:



Activities

- 1) **Repeat** example 1 very slowly to familiarise yourself with finger pattern 3 in the key of E Major by playing. Only speed up when the fingers are tapping neatly!
- 2) **Repeat** example 1 starting with an up-bow. Is this easier or harder to play, and why?
- 3) **Play through** example 2 slowly, starting with an up-bow. Remember to keep the 3rd finger stretched but relaxed.
- 4) In example 3, **check** the rhythm and bowing pattern of the second bar before you play.