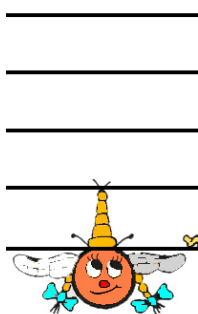


Notes D and A

How to Write D and A on the Stave

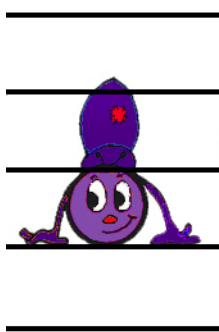
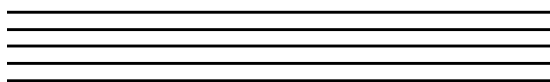
The middle two strings of the violin are **D** and **A**.
This is how we write the notes **D** and **A** on the stave:

Dora (D)



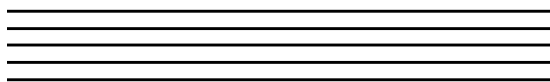
The note **D** lives under the bottom line of the stave.

Draw a treble clef and some **Ds** below.



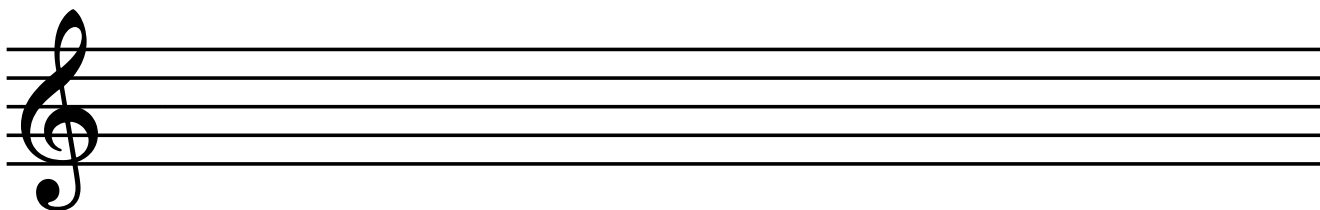
The note **A** lives in the 2nd space up.

Draw a treble clef and some **As** below.



Activities

1) **Create your own piece** by adding **Ds** and **As** in any order:



2) **Play** what you have written!