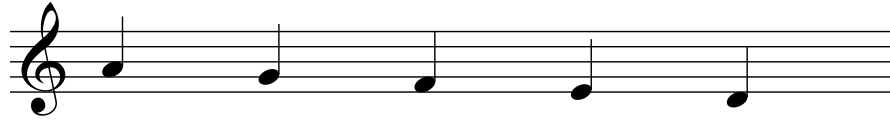


# STEM UP or STEM DOWN?!



... FOR NOTES PLACED BELOW THE MIDDLE LINE OF THE STAVE,  
THE STEM POINTS UP, AND ORIGINATES FROM THE RIGHT-HAND SIDE OF THE NOTE.



... FOR NOTES PLACED ON, AND ABOVE, THE MIDDLE LINE OF THE STAVE,  
THE STEM POINTS DOWN, AND ORIGINATES FROM THE LEFT-HAND SIDE OF THE NOTE.

